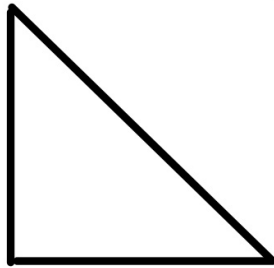


# L20: TRIANGLES

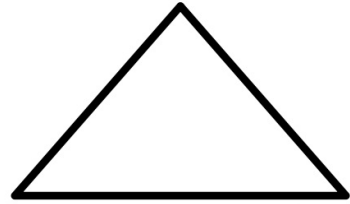
Sum of  $\Delta$ 's angles is  $180^\circ$



Scalene  
no = sides

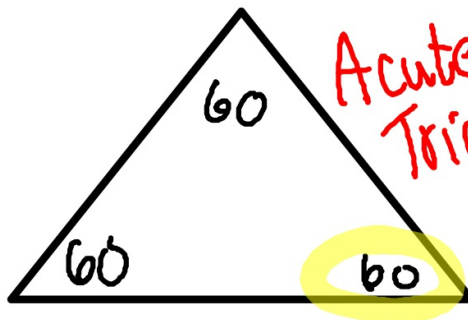


Isosceles  
1 pair of  
= sides

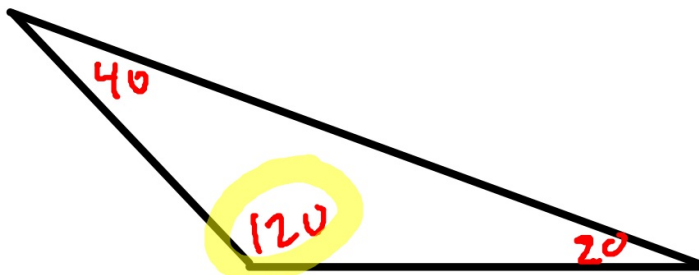


Equilateral  
3 = sides

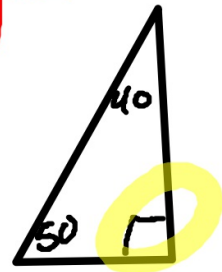
Classify by Angle  $\rightarrow$  look at largest angle



Acute  
Triangle



Obtuse  
Triangle



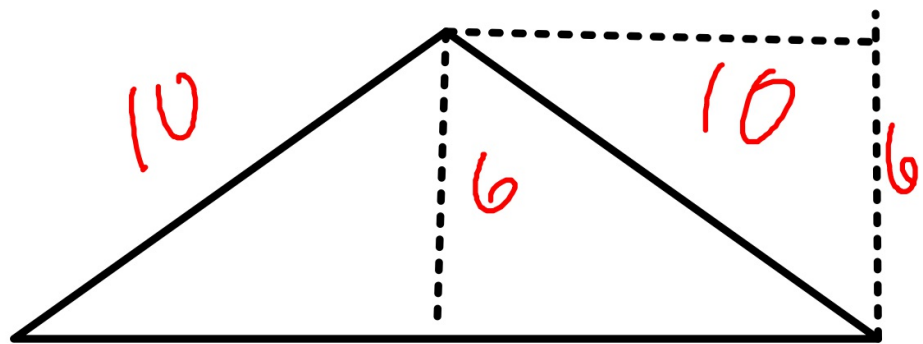
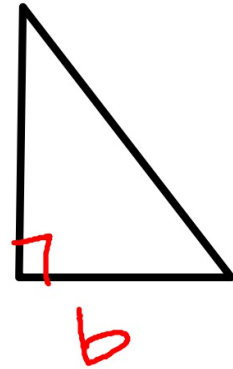
Right  
Triangle

All equilateral triangles have  
3 angles that each measure  $60^\circ$

AREA OF A TRIANGLE

$$\frac{1}{2}bh$$

perpendicular h  
to height



L20  
pset a-g  
H uno, tres, cinco,  
trece, diecicinco-  
veintiuno

$$\frac{1}{2}(16)(6)$$

48 u<sup>2</sup>